

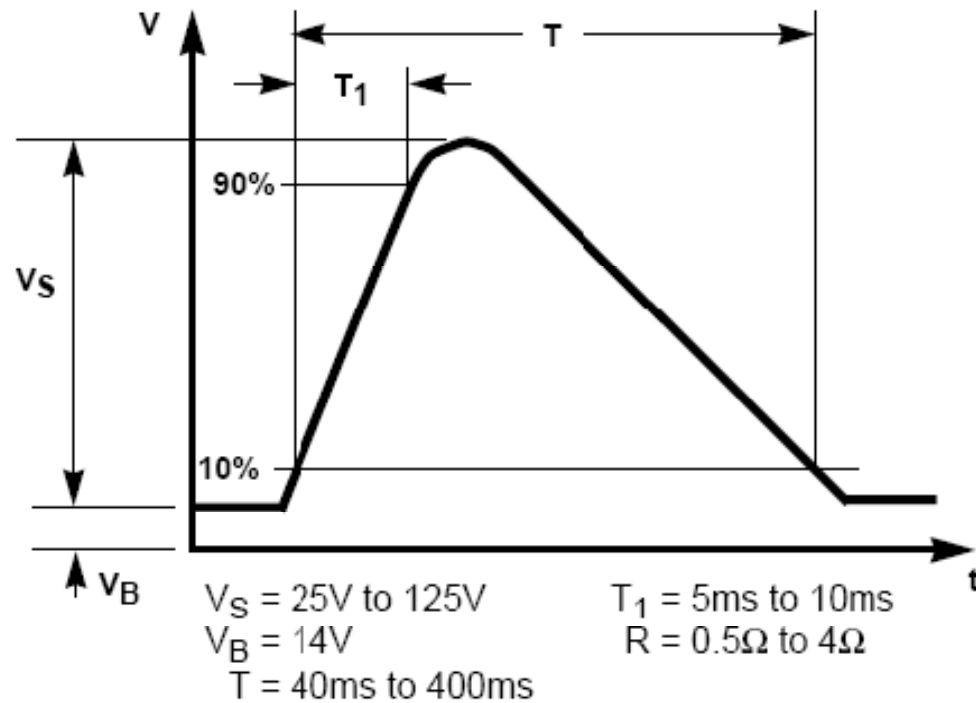
MSA ASSP

4/3/2008

MSA Marketing / Systems



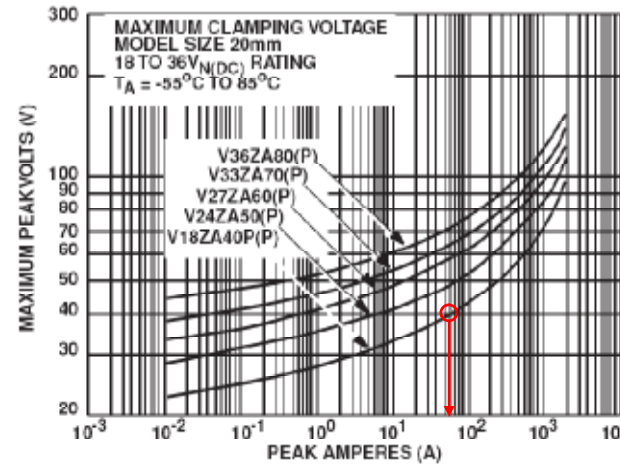
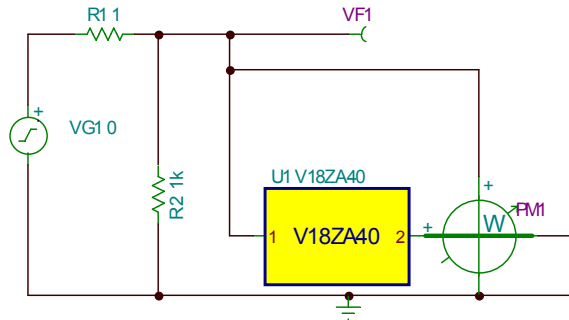
How Much Energy Will your Module See?



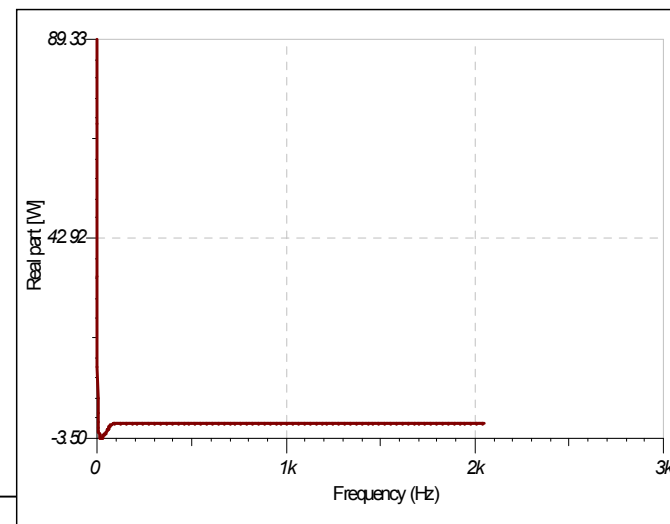
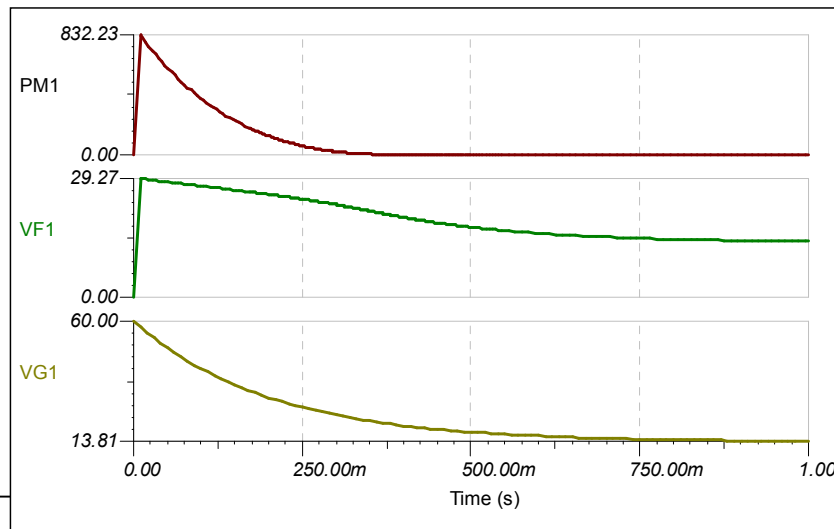
Dissipative

Simulation using ZA series MOV

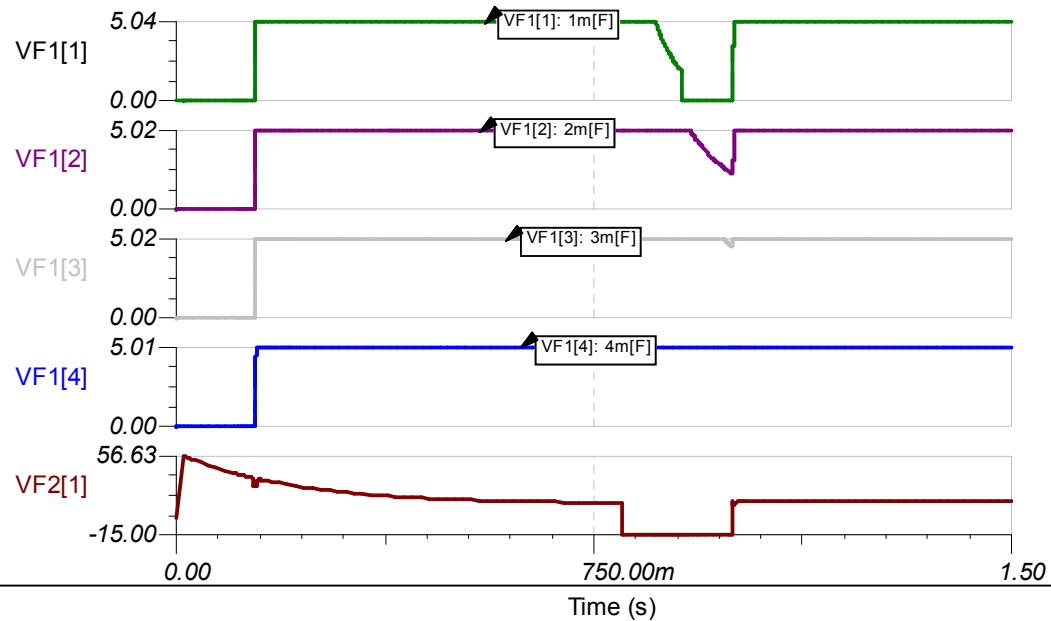
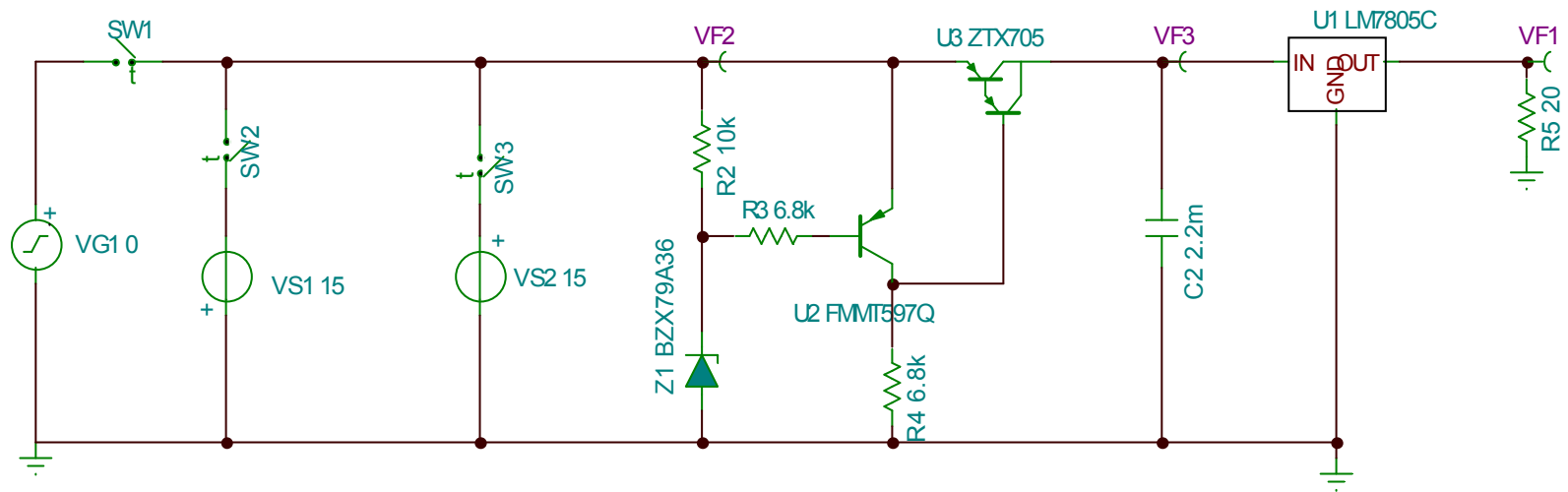
60V Load Dump, 1 ohm source impedance



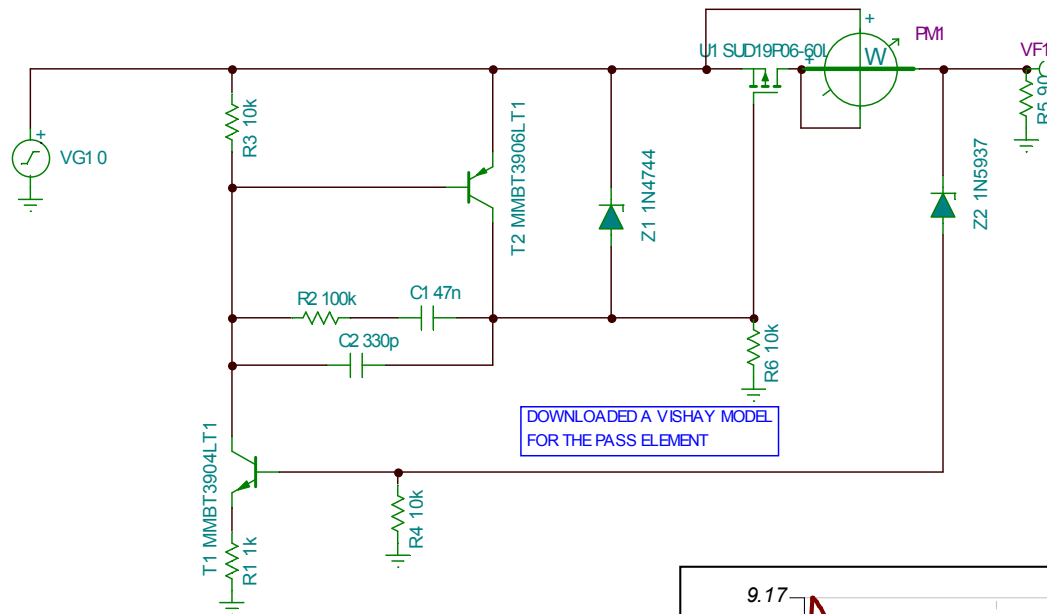
- 40V clamp
- 60A
- 832W peak
- 90J!



Load Dump Interrupt with Holdup Cap



Build a discrete Linear Regulator Alternate #2



*Response to a 60V
Load dump, $R_s=0$*

